

Printed Circuit Board Mount Switches

These versatile switches are a great choice for many applications due to their small size and variety of connection styles. Although these switches are built to connect to a printed circuit board, they can also be retrofitted for nearly any application by connecting wire leads. These switches can sense a pressure ranging from 6 inches of water all the way up to 65 PSI. For a frame of reference, a trumpet player blows 55 inches of water (or 2 PSI) on average, so these switches have a broad range. They can also be used to sense a vacuum ranging between 6 inches of water to 65 inches of water. Therefore, these miniature single pole and double pole switches are used as pressure, vacuum, or differential pressure switches where moderate accuracy is sufficient.

Presair switches deliver critical benefits:

SAFE: Presair switches deliver complete electrical isolation with zero voltage at the actuator to shock the user or spark an explosion.

ECONOMICAL: Presair's switching system costs are comparable or lower than digital controls meeting the needs of original equipment manufacturers.

ACCURATE: All switches are 100% tested to meet 100,000+ cycle life.

General Specification:

RATING: 1 amp resistive 250 VAC

Ratings are dependent on actuation pressure and must be derated at lower pressures.

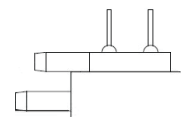
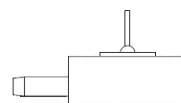
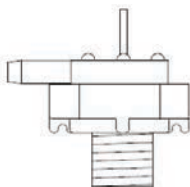
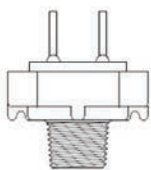
APPROVAL: UL Recognized, CUL Recognized. File #E80254

MATERIAL: Lower body: Rynite w/ pin terminals molded
Upper body: Acetal
Diaphragm material is dependent on application.

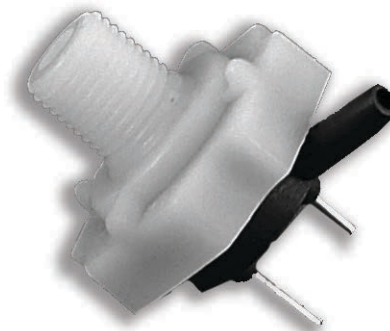
PRESSURE RANGE: When used as a pressure or vacuum switch the actuation point must be factory set.
Pressure: 6 inches of water - 65 Psi
Vacuum: 6 -200 inches of water

OPERATING TEMPERATURE: 40° - 150° Fahrenheit

BODY STYLE CONNECTIONS: 1/8" NPT with Center Air Spout 9/16-18 Thread with Center Air Spout Low Profile Radial Mount with Side Air Spout Radial Mount with Side Air Spouts



CSPSSGA - PC Mount Switch
1"x1"x1.5"



CNPSSGA - PC Mount Switch
1"x1"x1.5"

PRESAIR SWITCHES ARE DESIGNED & MANUFACTURED IN ALTOONA, WI, U.S.A.

Printed Circuit Board Switch

Select from each column to configure your part number:

MOUNTING OPTIONS	U 2 Pins, 90° Angle, 2 Side Spouts, Threaded Mount (Fig. A)		R 2/4 Pins, Radial Mount, Side Air Spout (Fig. B)		S 2 Pins, 90° Angle 9/16" Thread, Thread, Side Air Spout (Fig. C)		N 2/4 Pins, 1/8 NPT Center Air Spout	
	P Pressure		V Vacuum		A Air		D Differential Pressure	
SWITCH TYPE	P Pressure		V Vacuum		A Air		D Differential Pressure	
CONTACT FIGURATION	S SPST				D DPST			
DIAPHRAGM MATERIAL	S Silicone Rubber * Recommended for air switch applications.				N Nitrile * Recommended for pressure and vacuum applications.			
CONTACT MATERIAL	G Gold Plated Copper Alloy				S Silver Plated Copper Alloy			
SPECIAL Multiple options available.	A None		W Wire Leads		K Black Bottom Housing			
	PR PSI Rising		PF PSI Falling		WR Inches of Water Rising		WF Inches of Water Falling	
FACTORY SETTING Desired setpoint	PR PSI Rising		PF PSI Falling		WR Inches of Water Rising		WF Inches of Water Falling	

C
R
P
S
N
G
A
3PR

*Many custom options available, such as wire leads. Give us a call for more information.

CRPSNGA-3PR

